

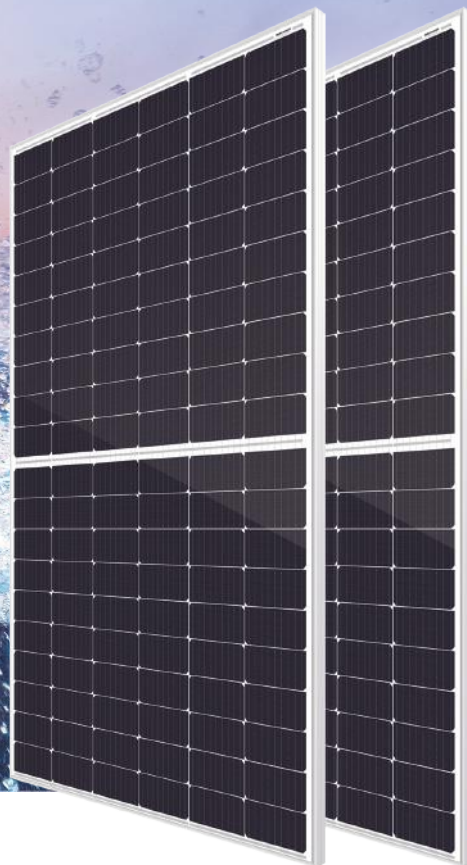
Haitai TaiJi 166

HTM360~380MH3-60

Monofacial high efficiency mono PV module

20.86%

Module Efficiency 20.86%



PRODUCT FEATURES

High Efficiency

The multi-busbar half-cut technology can boost energy density to deliver higher output.



Low Degradation

First-year degradation is less than 2.0%, with linear degradation of 0.55% per year for 25 years.



High Reliability

Certified in TUV salt spray, ammonia corrosion, 2400Pa wind load and 5400Pa snow load testing. Highly reliable.



Low Risk of Hot Spot

The next-generation cell technology and optimized circuit design adopted can support improved temperature coefficient and better hotspot resistance.



High ROI

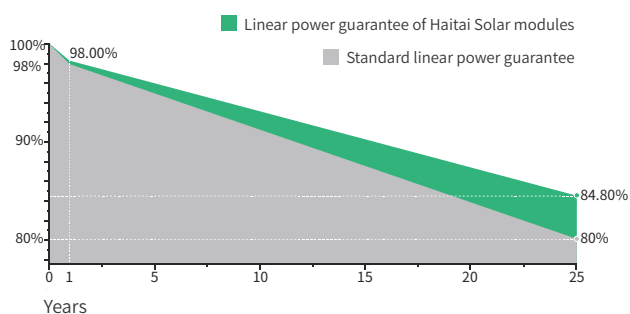
Effectively reducing BOS costs to achieve lower LCOE and enhanced project profitability.



Low Risk of Micro-Crack

The multi-busbar technology contributes to more effective prevention of Micro crack and broken busbars.

LINEAR PERFORMANCE WARRANTY



12 YEARS product warranty



25 YEARS linear power warranty



0.55% Linear attenuation of 0.55% per year within 25 years

CERTIFICATES

- IEC 61215, IEC 61730
- ISO 9001: 2015 Quality Management System
- ISO 14001: 2015 Environment Management System
- ISO 45001: 2018 Occupational health and safety management systems



Electrical Data (STC)

Maximum Power (Pmax/W)	360	365	370	375	380
Open Circuit Voltage (Voc/V)	40.60	40.80	41.00	41.20	41.40
Short Circuit Current (Isc/A)	11.30	11.37	11.45	11.54	11.60
Voltage at Maximum Power (Vmp/V)	33.52	33.72	33.92	34.12	34.32
Current at Maximum Power (Imp/A)	10.75	10.83	10.92	11.00	11.08
Module Efficiency (%)	19.76	20.04	20.31	20.59	20.86
Operating Temperature	-40° C~+85° C				
Maximum System Voltage	1000/1500V				
STC (Standard Testing Conditions): Irradiance 1000W/m ² , Cell Temperature 25° C, AM1.5					

Electrical Data (NMOT)

Maximum Power (Pmax/W)	267	271	275	279	283
Open Circuit Voltage (Voc/V)	37.29	37.49	37.69	37.89	38.09
Short Circuit Current (Isc/A)	9.36	9.44	9.51	9.59	9.65
Voltage at Maximum Power (Vmp/V)	30.74	30.94	31.14	31.34	31.54
Current at Maximum Power (Imp/A)	8.70	8.77	8.84	8.91	8.98

NMOT (Nominal Module Operating Temperature): Irradiance 800W/m², Ambient Temperature 20° C, AM1.5, Wind Speed 1m/s.

Mechanical Data

Cell Type	166×83mm Mono
Cell Orientation	120(6×20)
Module Dimensions	1755×1038×35mm
Weight	20.0kg
Glass	3.2mm high transmittance, reinforced glass
Backsheet	Anti-aging film
Frame Material	Anodized aluminum alloy
Junction Box	Protection class IP68
Cable	4.0 mm ² positive pole: 200 mm negative pole: 250 mm wire length can be customized
Connector	MC4 compatible connector

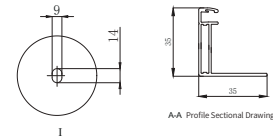
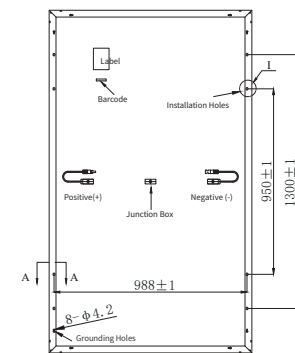
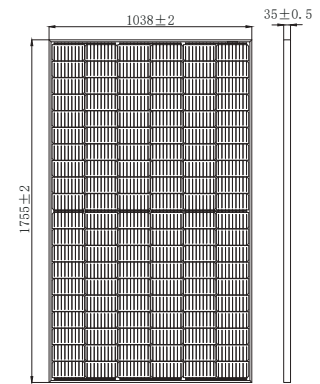
Temperature Coefficients

Temperature Coefficient (Pm)	-0.340%/°C
Temperature Coefficient (Voc)	-0.270%/°C
Temperature Coefficient (Isc)	0.048%/°C
NMOT (Nominal Module Operating Temperature)	41±3° C

Packaging

Transportation methods	Number of modules per cabinet	Number of modules per pallet
40HQ container	806pcs	31pcs +31pcs

Module Dimensions (mm)



I-V Curve

